

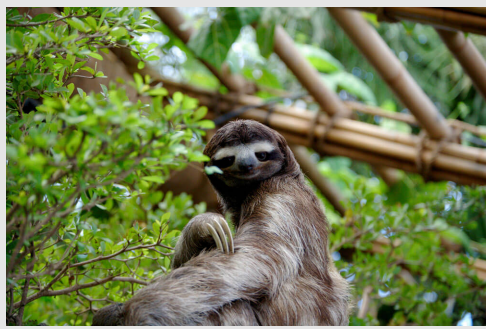
Animals of the world

Total: (/10)

Questions

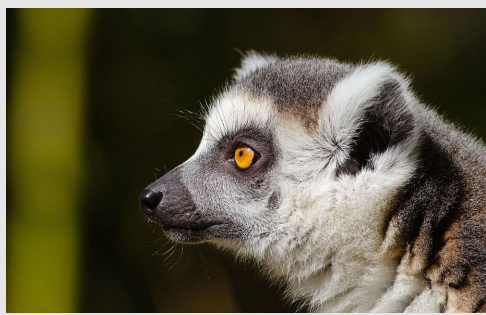
Answers

1. Sloths are tropical mammals. They use their long claws to hold onto branches and spend most of their time hanging upside down. Where would you most likely find sloths hanging out?



- A) Central and South America
- B) Southern Asia
- C) Western Africa
- D) Australia and New Zealand

2. Lemurs are primates and live in groups called "troops." On what island would you find these animals?



- A) Japan
- B) New Zealand
- C) Cuba
- D) Madagascar

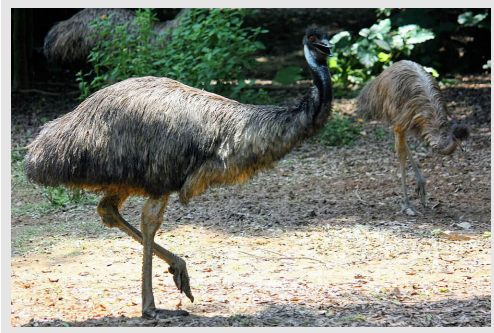
CHALLENGE

3. The llama was domesticated in the Andes more than 5,000 years ago. What continent do llamas originate from?



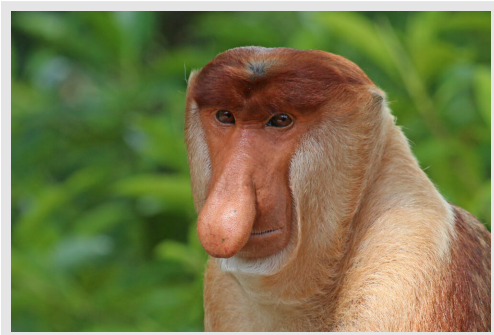
- A) South America
- B) Africa
- C) Australia
- D) Europe

4. Emu are the second largest birds on Earth after the ostrich. On which continent would you find these flightless birds?



- A) Australia
- B) Africa
- C) South America
- D) Asia

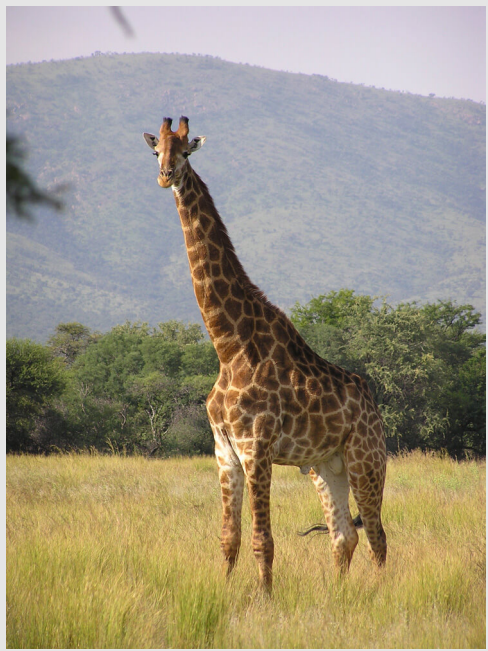
5. The proboscis monkey lives on this tropical island, which is the third largest in the world.



- A) Borneo
- B) Newfoundland
- C) Iceland
- D) Cyprus

CHALLENGE

6. The giraffe is the tallest animal in the world. They can be found in the savanna. Which continent do they live on?



- A) Australia
- B) Europe
- C) South America
- D) Africa

7. Bison, also sometimes referred to as buffalo, are large animals with very thick coats. It keeps them warm in winters and cool during summer months. On which continent do bison live?



- A) Australia
- B) Asia
- C) Antarctica
- D) North America

CHALLENGE

8. The emperor penguin is the tallest of all penguins. They live in colonies which consist of thousands of members. Which continent do they live on?



- A) North America
- B) Asia
- C) South America
- D) Antarctica

9. In Canada, puffin colonies can most commonly be found near which large body of water or bodies of water?



- A) Atlantic Ocean
- B) Pacific Ocean
- C) Arctic Ocean
- D) Great Lakes

CHALLENGE

10. Giant pandas live in mountain forests and eat mainly bamboo. Where would you find the native habitat of these bears?



- A) Taiwan
- B) China
- C) Japan
- D) India

Ancient Civilizations

Total: (/10)

Questions

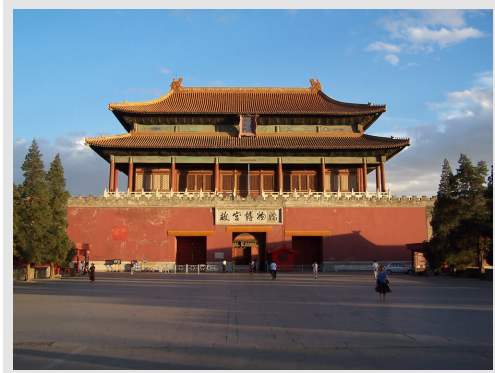
Answers

1. In this country, the Sphinx and the pyramids of Giza are well-known landmarks in the desert.



- A) Morocco
- B) Egypt
- C) Niger
- D) Tunisia

2. The Forbidden City, a former imperial complex, is considered the largest ancient palatial structure in the world. It was the home of 24 emperors. In which country is the Forbidden City located?



- A) Japan
- B) Thailand
- C) South Korea
- D) China

CHALLENGE

3. The ancient city of Pompeii fell when Mount Vesuvius erupted and covered everything in volcanic ash. Where are the ruins of Pompeii located?



- A) Italy
- B) Greece
- C) Spain
- D) Turkey

4. The Greek word for Mesopotamia means "between the rivers." Between which two rivers was Mesopotamia located?



- A) Tigris and Euphrates
- B) Nile and Congo
- C) Yangtze and Yellow
- D) Ganges and Indus

5. This temple complex structure is considered to be the largest religious monument in the world.



- A) Pyramids of Giza, Egypt
- B) Temple of Heaven, China
- C) Angkor Wat, Cambodia
- D) Golden Temple, Thailand

CHALLENGE

6. Chocolate is thought to have originated with the Olmec people, who existed before the Mayan and Aztec civilizations. Where was the Olmec civilization located?



- A) United States
- B) Argentina
- C) Brazil
- D) Mexico

7. Shinto is an ancient set of beliefs centred on rituals and shrines for communicating with spirits. This traditional way of life still exists today. In which country would you find people practising Shinto spirituality?



- A) China
- B) India
- C) Indonesia
- D) Japan

CHALLENGE

8. Hadrian's Wall was built as a defensive fortification in northern Britain. Which ancient civilization is responsible for its construction?



- A) Roman
- B) Spartan
- C) Greek
- D) Celtic

9. This ancient, prehistoric monument consists of a ring of standing stones and is believed to have been constructed as early as 3,000 BC.



- A) Machu Picchu
- B) Angkor Wat
- C) Stonehenge
- D) Sphinx

CHALLENGE

10. The ancient city of Troy, famous for the myth of the Trojan Horse, is thought to be located in which modern-day country?



- A) Turkey
- B) Egypt
- C) Brazil
- D) Mongolia

Geography Facts

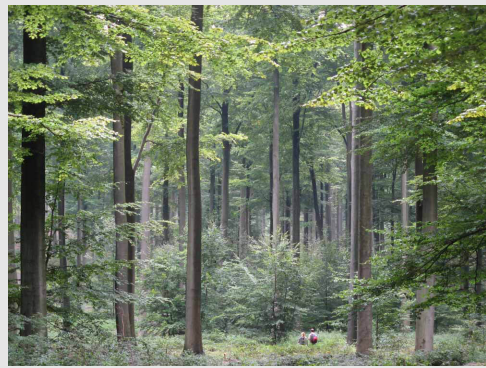
Total: (/10)

Questions

Answers

1. Everything in the Earth's system can be sorted into four spheres. In what sphere would you find volcanoes?
 - A) Biosphere
 - B) Atmosphere
 - C) Hydrosphere
 - D) Lithosphere

2. What percentage of Earth's land is covered by forest?

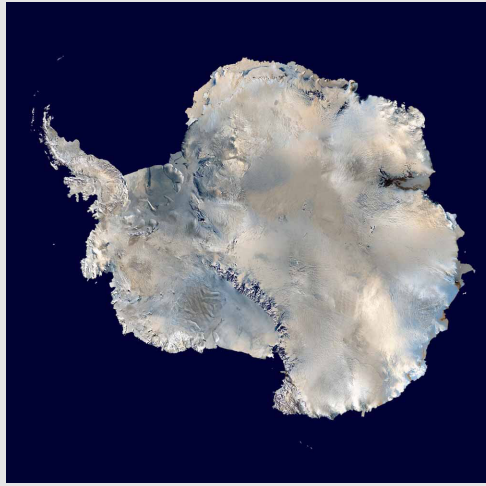


- A) 51%
- B) 31%
- C) 21%
- D) 41%

3. This jungle is the world's largest tropical rainforest.
 - A) Amazon
 - B) Congo
 - C) Daintree
 - D) Yasuni

CHALLENGE

4. True or False: At the magnetic South Pole, all directions face north.



- A) TRUE
- B) FALSE

5. Mount Everest is the highest mountain on Earth above sea level, with its peak measuring 8,848 metres. What is the name of the mountain chain in which Everest is located?



- A) Alps
- B) Andes
- C) Rocky Mountains
- D) Himalayas

CHALLENGE

6. Lake Titicaca is the world's highest navigable (large) lake, located between Bolivia and Peru. Name the continent on which you would find this lake.



- A) South America
- B) Asia
- C) Europe
- D) Africa

7. The Grand Canyon, which is carved by the Colorado River, is one of the most well-known natural landmarks in the United States. What state would you find this canyon in?



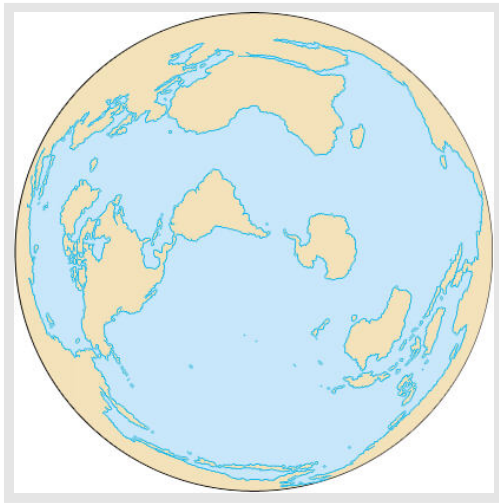
- A) Alaska
- B) Arizona
- C) Alabama
- D) Arkansas

CHALLENGE

8. How many time zones are there in the world?

- A) 12
- B) 6
- C) 24
- D) 18

9. What is the deepest known point in the ocean?



- A) Challenger Deep
- B) South Sandwich Trench
- C) Japan Trench
- D) Horizon Deep

10. What is the largest island in the world?

- A) Australia
- B) Greenland
- C) Baffin
- D) Great Britain

Canada

Total: (/10)

Questions

Answers

1. Around 1,000 years ago, the Vikings came to Canada. In what province can you find Norse sod longhouses, which are part of a UNESCO World Heritage Site?



- A) Newfoundland and Labrador
- B) Nova Scotia
- C) Prince Edward Island
- D) British Columbia

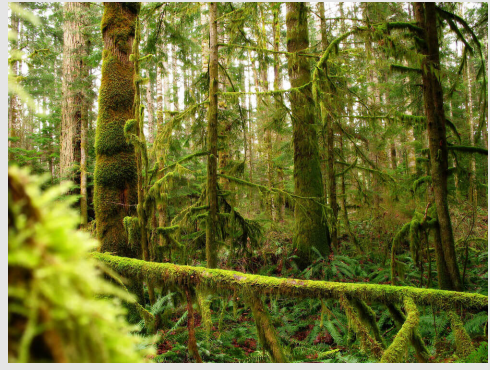
2. True or False: The Niagara Falls were created about 12,000 years ago by a retreating glacier.



- A) FALSE
- B) TRUE

CHALLENGE

3. In which Canadian province can you find a temperate rainforest?



- A) British Columbia
- B) Alberta
- C) Newfoundland and Labrador
- D) Ontario

4. In which province or territory would you find the largest concentration of pingos (hills that are formed by permafrost)?



- A) Ontario
- B) Northwest Territories
- C) Manitoba
- D) Nunavut

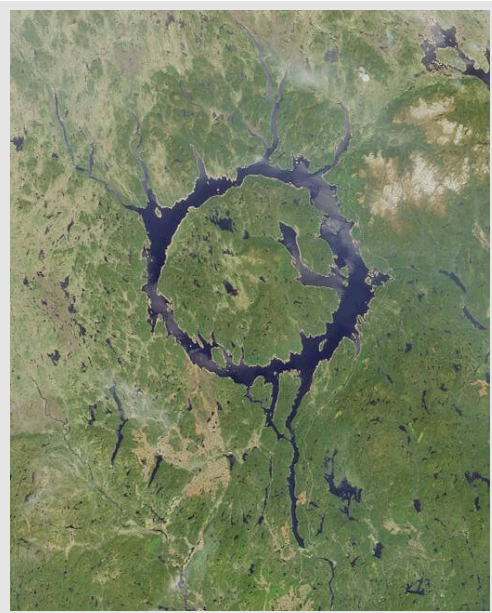
CHALLENGE

5. Churchill is a town on the coast of Hudson Bay. It is also called the "polar bear capital of the world." In what province or territory is Churchill located?



- A) Manitoba
- B) Ontario
- C) Nunavut
- D) Quebec

6. What caused the Manicouagan Crater?



- A) Mining
- B) Asteroid
- C) Glaciers
- D) Deforestation

CHALLENGE

7. What is the 49th parallel also known as?

- A) The Arctic Circle
- B) The Canada/U.S. border
- C) The St. Lawrence River
- D) The Equator

8. The Columbia Icefield is the largest icefield in Canada south of the Arctic. Which Canadian mountain range is the Columbia Icefield located in?



- A) The Coastal Mountains
- B) The Cascade Mountains
- C) Rocky Mountains
- D) The Appalachian Mountains

9. What is Canada's largest lake located entirely within Canada's borders?

- A) Great Bear Lake
- B) Lake Superior
- C) Lake Ontario
- D) Lake Manitoba

10. Located on the border of Alberta and the Northwest Territories, this is Canada's largest national park.

- A) Banff National Park
- B) Quttinirpaaq National Park
- C) Torngat Mountains National Park
- D) Wood Buffalo National Park

Global Food

Total: (/10)

Questions

Answers

1. Naan, roti and paratha are popular breads in this country, which is Asia's third largest country by land area.



- A) China
- B) India
- C) Mongolia
- D) Bangladesh

2. Feta cheese, olives, and lemons are key ingredients in the diet of people living in this country, which is the southernmost country in Europe.



- A) Italy
- B) Turkey
- C) Greece
- D) Bulgaria

3. Located between Poland and Russia, this country's most popular dish is a hearty soup called borsch.



- A) Romania
- B) Hungary
- C) Moldova
- D) Ukraine

4. The Aboriginal people living in this country eat native plants and animals such as emu and kangaroo, which are part of a diet called bush tucker.



- A) Canada
- B) United States
- C) Australia
- D) India

5. The national dish of this country, which sits on a peninsula of the same name, is a spicy cabbage dish known as kimchi.



- A) China
- B) Japan
- C) South Korea
- D) India

CHALLENGE

6. This country, which is the largest in South America and fifth largest in the world, has a national dish called feijoada, a type of bean and meat stew.



- A) Argentina
- B) Chile
- C) Ecuador
- D) Brazil

7. Fried plantains are a common dish in this island country, which is the largest country in the Caribbean region.



- A) Bermuda
- B) Cuba
- C) Haiti
- D) Dominican Republic

8. Haggis, a dish made from meat and oats and packed inside a sheep's stomach, comes from which part of the British Isles?



- A) England
- B) Scotland
- C) Wales
- D) Northern Ireland

CHALLENGE

9. Pho is a popular noodle soup originating from which country?



- A) China
- B) Japan
- C) Vietnam
- D) South Korea

10. Visitors to Berlin, the capital of this country, can expect to try dishes such as soft pretzels and bratwurst (sausage).



- A) France
- B) Spain
- C) Germany
- D) Switzerland